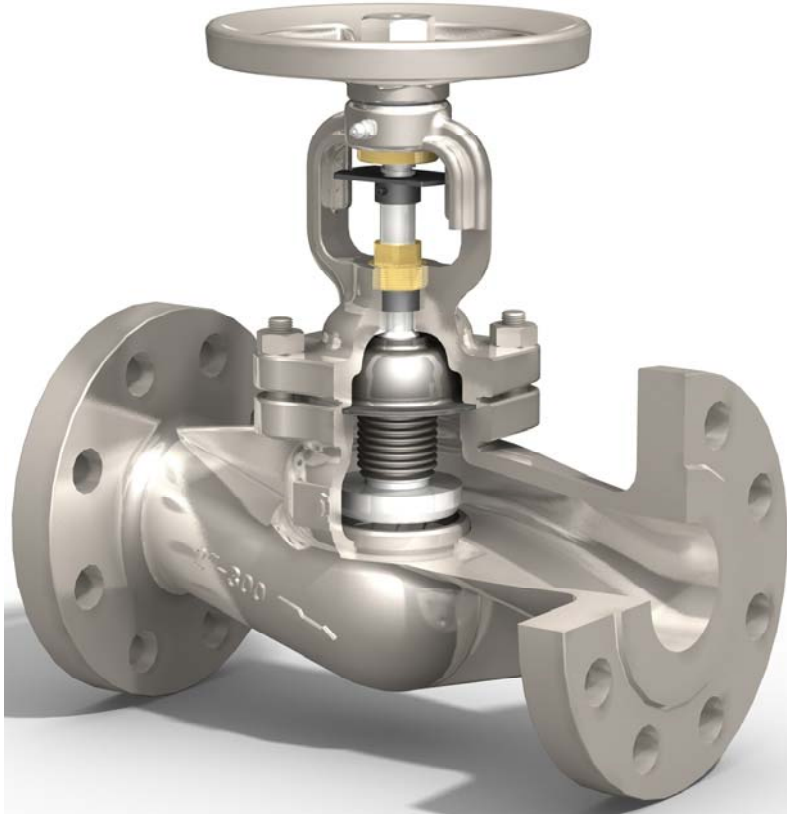




Class 300 鑄鋼/鑄不銹鋼伸縮囊密封型球型閥
 Class 300 Cast Steel/Cast Stainless Steel
 Bellows Sealed Globe Valve

FIG FL37 Series



Selection of possible applications:

- Industry
 - Powerstations
 - Flue gas purification plant
 - Processing technology
 - Gas supply
 - Vapour facilities
 - Thermal oil applications
 - Recycling facilities
 - Vacuum facilities
 - Ammonia
 - Hot water
 - Heating technology
 - District heating
 - Cooling and freezing systems
 - General plant manufacturing
 - Steam systems
- other applications on request -

Design Description:

- Globe valve in straight way type
- Bolted bonnet
- Outside screw and yoke
- Antirotation device and mechanical position indicator
- Rising stem and non-rising handwheel
- Disc with conical metallic sealing surface
- Metal back seat
- Lubricating Nipple as Standard
- Secondary Sealing : gland packing
- Stem sealed with bellows tested for 5,000 full open/closed operations at 20°C
- Shell wall thickness acc. ASME B16.34
- Face to face dimensions acc. to ASME B16.10
- Flanges acc. to ASME B16.5
- Test pressure acc. to API 598
- Maintenance free
- Free from abestos,PCB and CFC

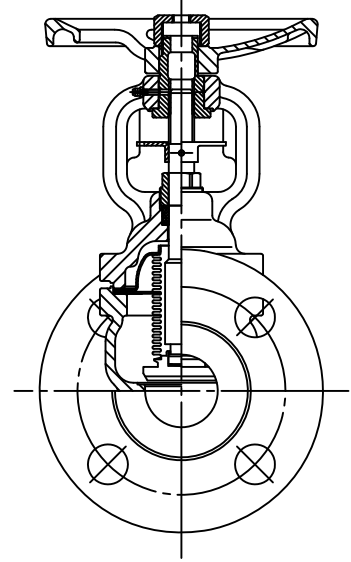
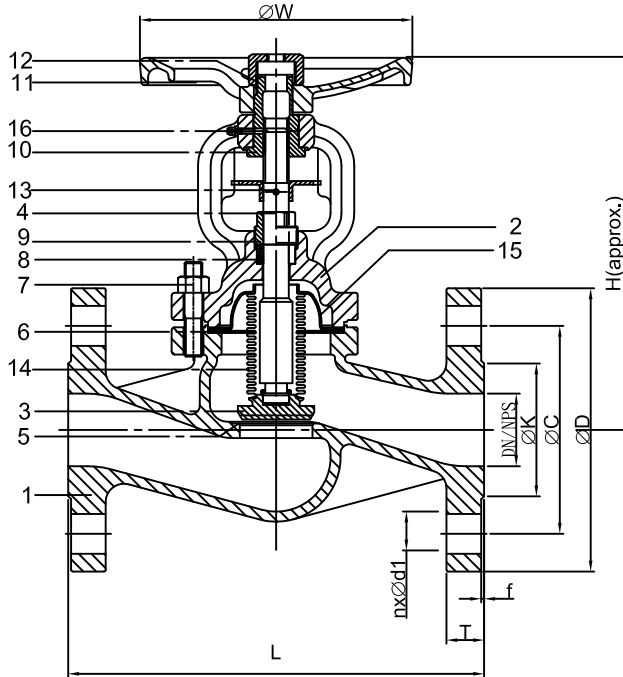
Pressure/Temperature Ratings:

CLASS 300	BODY Material	Temp.	Working Pressure	SHELL TEST (water)	SEAT TEST (water)	SEAT TEST (air)
	A351 Gr.CF8		100°F 38°C	720 psig 49.6 bar	1100 psig 77 bar	795 psig 55 bar
1000°F 538°C			355 psig 24.4 bar			
A351 Gr.CF8M		100°F 38°C	720 psig 49.6 bar	1100 psig 77 bar	795 psig 55 bar	80 psig 5.5 bar
		1000°F 538°C	365 psig 25.2 bar			
A 216 Gr.WCB		100°F 38°C	740 psig 51.1 bar	1125 psig 78 bar	815 psig 56 bar	80 psig 5.5 bar
		800°F 425°C	410 psig 28.8 bar			



Class 300 鑄鋼/鑄不銹鋼伸縮囊密封型球型閥
 Class 300 Cast Steel/Cast Stainless Steel
 Bellows Sealed Globe Valve

FIG FL37 Series



1/2"~2"

Valve Parts List:

Item	Part name	Material		Remarks
		A216Gr. WCB	A351Gr. CF8/CF8M	
1	Body	A216 WCB	A351 CF8/CF8M	
2	Bonnet	A216 WCB	A351 CF8/CF8M	
3	Disc*	13%Cr	S.S. 304/S.S.316	HF on request
4	Stem	13%Cr	S.S. 304/S.S.316	
5	Boby Seat	13%Cr	AS BODY	HF on request
6	Gasket	Graphite	Graphite	
7	Bonnet Bolts & Nuts	Steel	Stainless Steel	
8	Gland Packing	Graphite	PTFE	
9	Gland	Brass	Brass	
10	Stem Nut	Al Bronze	Al Bronze	
11	Handwheel	Ductile Iron	Ductile Iron	
12	Handwheel Nut	Ductile Iron	Ductile Iron	
13	Position Indicator	Steel	Steel	
14	Bellows	S.S. 304	S.S. 304/S.S.316	
15	Bellows Flange	S.S. 304	S.S. 304/S.S.316	
16	Lubricating Nipple	S.S. 304	S.S. 304	

* Soft disc inserts available for gas or vacuum service

Dimensions Table:

Unit : mm

SIZE		H	$\varnothing W$	L	CLASS 300						Kvs vaule
DN	NPS				$\varnothing D$	$\varnothing C$	$\varnothing K$	$nx\varnothing d1$	T	f	
15	1/2"	159	125	152	95.25	66.5	35.05	4x16	14.3	1.6	4
20	3/4"	159	125	177.8	117.35	82.5	42.93	4x19	15.9	1.6	7
25	1"	159	125	203.2	123.95	89	50.8	4x19	17.5	1.6	12
40	1-1/2"	210	150	228.6	155.45	114.5	73.15	4x22.22	20.7	1.6	30
50	2"	210	150	266.7	165.1	127	91.95	8x19	22.3	1.6	47

Larger sizes available on request