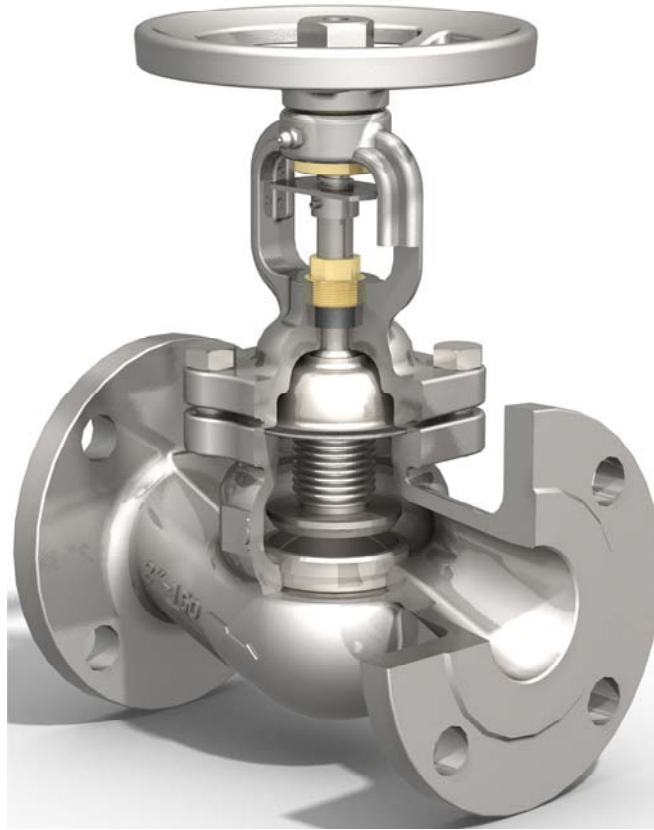




Class 150 鑄鋼/鑄不銹鋼伸縮囊密封型球型閥
 Class 150 Cast Steel/Cast Stainless Steel
 Bellows Sealed Globe Valve

FIG FN37 Series



Selection of possible applications:

- Industry
 - Powerstations
 - Flue gas purification plant
 - Processing technology
 - Gas supply
 - Vapour facilities
 - Thermal oil applications
 - Recycling facilities
 - Vacuum facilities
 - Ammonia
 - Hot water
 - Heating technology
 - District heating
 - Cooling and freezing systems
 - General plant manufacturing
 - Steam systems
- other applications on request -

Design Description:

- Globe valve in straight way type
- Bolted bonnet
- Outside screw and yoke
- Antirotation device and mechanical position indicator
- Rising stem and non-rising handwheel
- Disc with conical metallic sealing surface
- Metal back seat
- Lubricating Nipple as Standard
- Secondary Sealing : gland packing
- Stem sealed with bellows tested for 5,000 full open/closed operations at 20° C
- Shell wall thickness acc. ASME B16.34
- Face to face dimensions acc. to ASME B16.10
- Flanges acc. to ASME B16.5
- Test pressure acc. to API 598
- Maintenance free
- Free from abestos,PCB and CFC

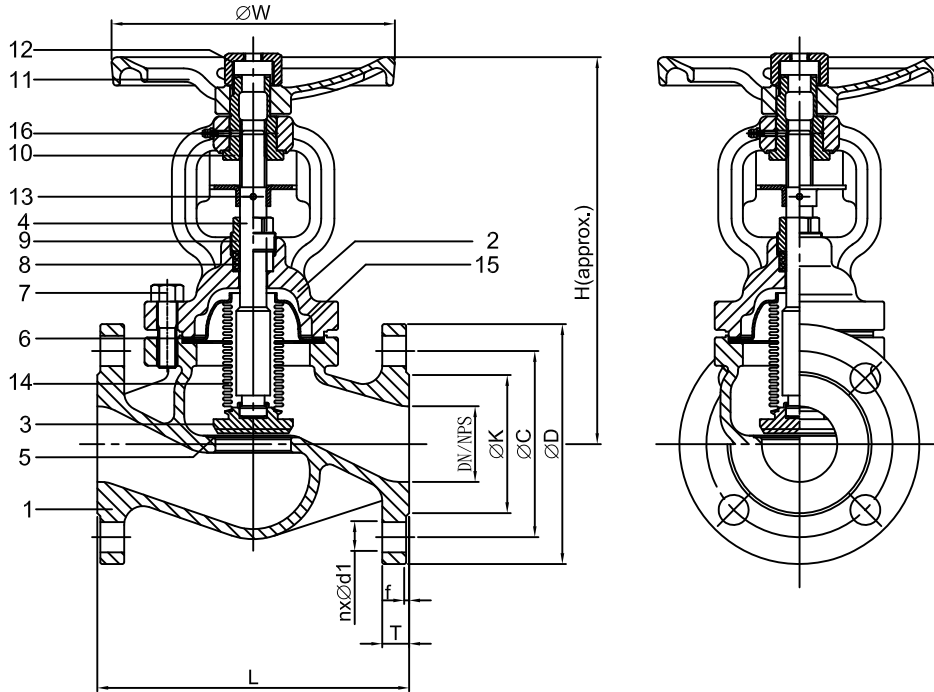
Pressure/Temperature Ratings:

	BODY Material	Temp.	Working Pressure	SHELL TEST (water)	SEAT TEST (water)	SEAT TEST (air)
Class 150	A 351 Gr.CF8/CF8M	100°F 38°C	275 psig 19 bar	425 psig 29 bar	305 psig 21 bar	80 psig 5.5 bar
		1000°F 538°C	20 psig 1.4 bar			
	A 216 Gr.WCB	100°F 38°C	285 psig 19.6 bar	450 psig 31 bar	315 psig 22 bar	80 psig 5.5 bar
		800°F 425°C	80 psig 5.5 bar			



Class 150 鑄鋼/鑄不銹鋼伸縮囊密封型球型閥
 Class 150 Cast Steel/Cast Stainless Steel
 Bellows Sealed Globe Valve

FIG FN37 Series



½"~2"

Valve Parts List:

Item	Part name	Material		Remarks
		A216Gr. WCB	A351Gr. CF8/CF8M	
1	Body	A216 WCB	A351Gr. CF8/CF8M	
2	Bonnet	A216 WCB	A351Gr. CF8/CF8M	
3	Disc*	13%Cr	S.S.304/S.S.316	HF on request
4	Stem	13%Cr	S.S.304/S.S.316	
5	Body Seat	13%Cr	AS BODY	HF on request
6	Gasket	Graphite	Graphite	
7	Bonnet Bolts	Steel	Stainless Steel	
8	Gland Packing	Graphite	Graphite	
9	Gland	Brass	Brass	
10	Stem Nut	Al Bronze	Al Bronze	
11	Handwheel	Ductile Iron	Ductile Iron	
12	Handwheel Nut	Ductile Iron	Ductile Iron	
13	Position Indicator	Steel	Steel	
14	Bellows	S.S. 304	S.S. 304/S.S.316	
15	Bellows Flange	S.S. 304	S.S. 304/S.S.316	
16	Lubricating Nipple	S.S. 304	S.S. 304	

* Soft disc inserts available for gas or vacuum service

Dimensions Table:

Unit : mm

SIZE		H	ØW	L	CLASS 150						Kvs vaule
DN	NPS				ØD	ØC	ØK	nxØd1	T	f	
15	1/2"	154	125	108	88.9	60.5	35.5	4x16	11.1	1.6	4
20	3/4"	154	125	117.3	98.55	70	42.93	4x16	11.1	1.6	7
25	1"	159	125	127	107.95	79.5	50.8	4x16	11.1	1.6	12
40	1-1/2"	210	150	165.1	127	98.5	73.15	4x16	14.3	1.6	30
50	2"	210	150	203.2	152.4	120.5	91.95	4x19	15.9	1.6	47

Larger sizes available on request