



Class 300 鑄鋼/鑄不銹鋼伸縮囊密封型閘門閥
 Class 300 Cast Steel/Cast Stainless Steel
 Bellows Sealed Gate valve

FIG FL49 Series



Selection of possible applications:

- Industry
- Powerstations
- Flue gas purification plant
- Processing technology
- Gas supply
- Vapour facilities
- Thermal oil applications
- Recycling facilities

- Vacuum facilities
- Ammonia
- Hot water
- Heating technology
- District heating
- Cooling and freezing systems
- General plant manufacturing
- Steam systems

- other applications on request -

Design Description:

- Bolted bonnet
- Outside screw and yoke
- Fixible wedge, Fully Guided
- Renewable seat ring
- Rising stem and non-rising handwheel
- Metal back seat
- Lubricating Nipple as Standard
- Secondary Sealing : gland packing
- Renewable bellows sealed bonnet assembly
- Different types of connection available.
(Butt Weld, and Flange Ends)
- Stem sealed with bellows tested for 3,000 full open/closed operations at 20°C
- Design and Manufacturing acc. to API 600
- Shell wall thickness acc. ASME B16.34
- Butt Weld Ends acc. to ASME B16.25
- Flanges Ends acc. to ASME B16.5
- Flanges face to face dimensions acc. to ASME B16.10
- Test pressure acc. to API 598
- Maintenance free
- Free from asbestos,PCB and CFC

Pressure/Temperature Ratings:

Class 300	BODY Material	Temp.	Working Pressure	SHELL TEST (water)	SEAT TEST (water)	SEAT TEST (air)
	A351 Gr.CF8	100°F 38°C	720 psig 49.6 bar	1100 psig 77 bar	795 psig 55 bar	80 psig 5.5 bar
1000°F 538°C		350 psig 24.4 bar				
A351 Gr.CF8M	100°F 38°C	720 psig 49.6 bar	1100 psig 77 bar	795 psig 55 bar	80 psig 5.5 bar	
	1000°F 538°C	365 psig 25.2 bar				
A 216 Gr.WCB	100°F 38°C	740 psig 51.1 bar	1125 psig 78 bar	815 psig 56 bar	80 psig 5.5 bar	
	800°F 425°C	410 psig 28.8 bar				

Valve Parts List:

Item	Part name	Material		
		A216-WCB	A351-CF8	A351-CF8M
1	Body	A216-WCB	A351-CF8	A351-CF8M
2	Seat ring	13%Cr	304SS	316SS
3	Wedge	A216-WCB	A351-CF8	A351-CF8M
4	Stem	13%Cr	S.S.304	S.S.316
5	Gasket	Grafoll+304Sheet	Grafoll+304Sheet	Grafoll+316Sheet
6	Bonnet	A216-WCB	A351-CF8	A351-CF8M
7	Bellows	S.S.304	S.S.304	S.S.316
8	Packing	Graphite	Graphite	Graphite
9	Gland	13%Cr	A351Gr.CF8	A351Gr.CF8
10	Gland Flange	A216-WCB	A351-CF8	A351-CF8M
11	Eye Bolts	A307-B	A193-B8	A193-B8M
12	Eye Bolt Nut	A194-2H	A193-B8	A194-8M
13	Eye Bolt Pin	A36	A276-304	A276-304
14	Bonnet bolt	A193-B7	A193-B8	A194-8M
15	Bonnet nut	A194-2H	A194-8	A194-8M
16	Stem nut	A439-D2	A439-D2	A439-D2
17	Handwheel	Ductile Iron	Ductile Iron	Ductile Iron
18	Handwheel nut	Ductile Iron	Ductile Iron	Ductile Iron
19	Upper Bellows Joint	13%Cr	S.S.304	S.S.316
20	Lower Bellows Joint	13%Cr	S.S.304	S.S.316
19	Lubricating Nipple	S.S.304	S.S.304	S.S.304

**Seating face with stellite is on request.

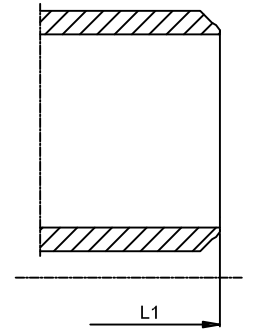
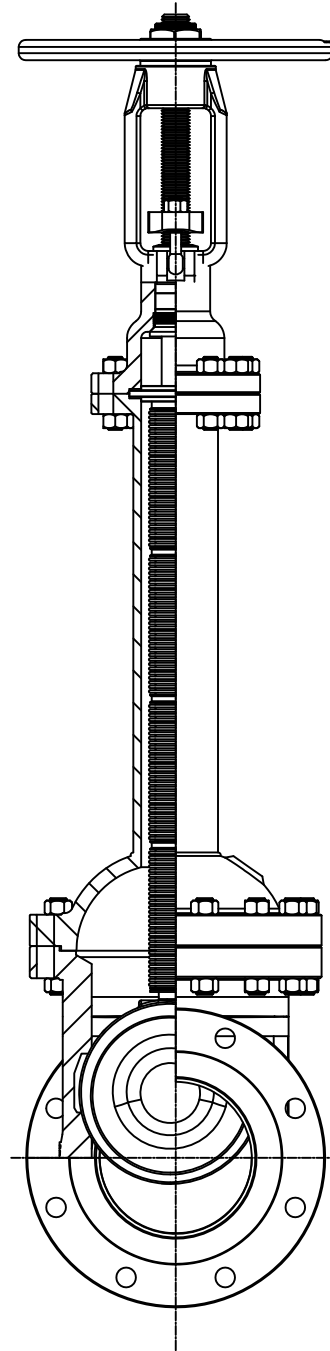
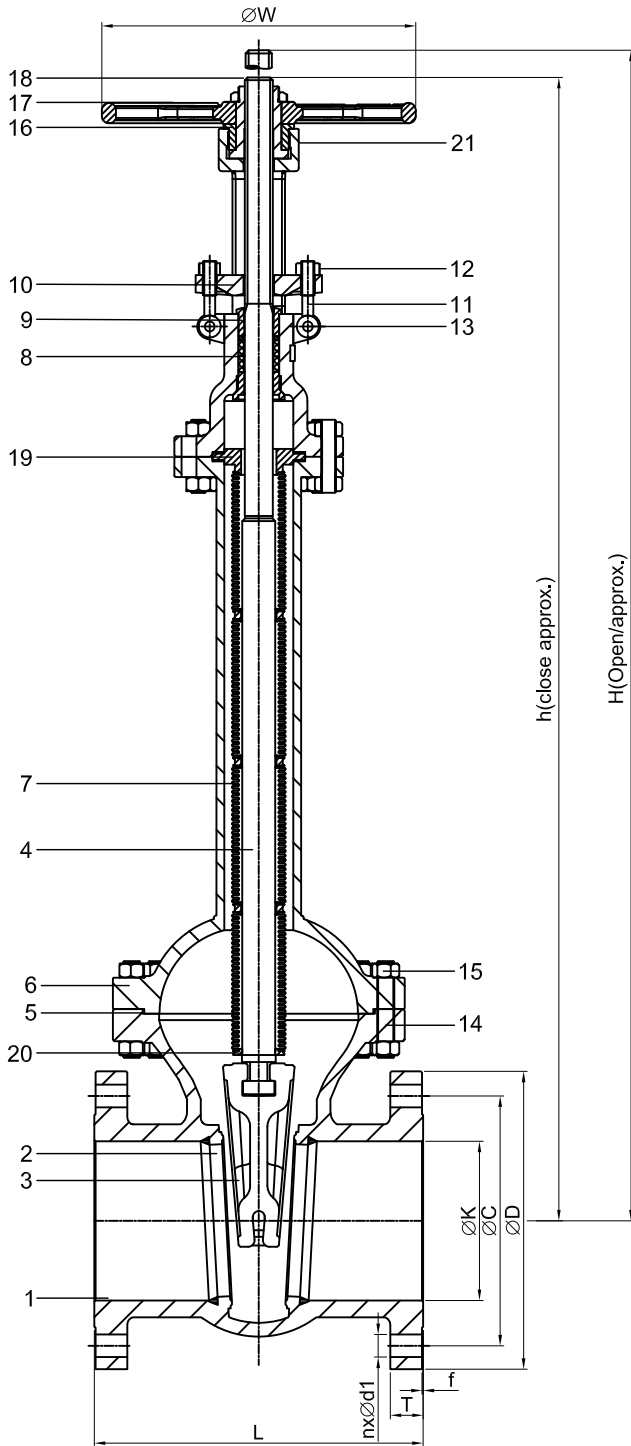


Class 300 鑄鋼/鑄不銹鋼伸縮囊密封型閘門閥

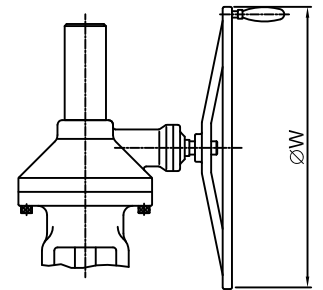
Class 300 Cast Steel/Cast Stainless Steel

Bellows Sealed Gate valve

FIG FL49 Series



Butt-Weld



Gear Operator

Class 150-10" and larger
Class 300- 8" and larger

Dimensions Table:

Unit : mm

SIZE		L & L1	ØW	h	H	CLASS 300					
DN	NPS					ØD	ØC	ØK	nxØd1	T	f
50	2"	216	180	610	671	165	127	92	8xØ19	22.3	1.6
65	2-1/2"	241	250	777	872	190	149	105	8xØ22	25.4	1.6
80	3"	282	300	777	870	210	168	127	8xØ22	28.6	1.6
100	4"	305	300	1350	1511	254	200	157	8xØ22	31.8	1.6
150	6"	403	400	1421	1595	318	270	216	12xØ22	36.6	1.6
200	8"	419	600	1435	1671	381	330	270	12xØ25	41.3	1.6
250	10"	457	600	1800	2080	444	387.5	324	16xØ29	47.7	1.6
300	12"	502	600	2100	2410	521	451	381	16xØ32	50.8	1.6
350	14"	762	600	2350	2700	584	514.5	413	20xØ32	54	1.6
400	16"	838	600	2620	3030	648	571.5	470	20xØ35	57.2	1.6